

Connecteur femelle Deutsch DT de 8 pôles - 10 pcs

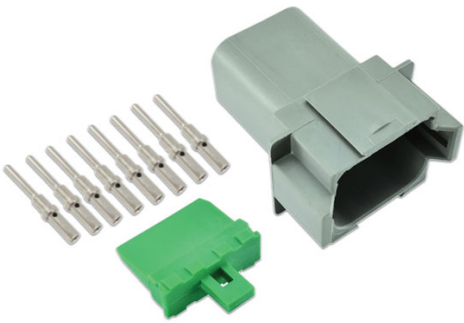
Heavy duty connectors which protect against the weather, dirt and high temperatures. Connectors have a locking mechanism to prevent the wires and terminals vibrating free. Once cable has been crimped onto the terminal, push the terminal through the back of the connector until you hear a 'click'. Turn the connector around and insert the wedge lock plate until you hear the 'click' again which will give a secondary securing lock for the terminals. The pin terminals are inserted into the connector receptacles and the socket pin terminals are used on the connector plugs. For a professional crimp please use our Laser Part No 7533. Industry standard size 16.



Additional Information

- Le kit contient le connecteur à 8 pôles
- Système femelle de verrouillage intégré du connecteur assurant une connection étanche parfaite
- Le connecteur femelle convient pour des cosses non isolées allant sur du câble en 0.5 - 1.5mm² câble (20-16AWG). Les cosses sont disponibles sous la ref 37510.
- Pour un sertissage professionnel, merci d'utiliser la ref Laser Tools 7533
- Fournis sous blister

<http://product/37508>



Related Tools



Terminal & Connector Tool Set 5pc | 7807



4 Way Indent Crimping Tool | 7533